

Gascoyne Indigenous Green Team

Rangelands NRM assisted Carnarvon's CDEP provider – EMU Services - in obtaining a recent Community Action Grant of \$20,000.00 to begin establishing an Indigenous Green Team for the Gascoyne region. This outcome was mainly due to the efforts of Mr Rodney Ryan who spent many hours over a couple of years meeting with Rangelands NRM's Indigenous Facilitator,

Bevan Gray. Although the concept did not meet specific CfoC (Caring for our Country) funding requirements, Mr Ryan, on behalf of EMU Services, continued to explore all avenues to get the group up and running. During these negotiations it was discovered that a Community Action Grant could be applied for by targeting Weeds of National Significance (WoNS) namely **Athel Pine**

(Tamarix) and both Jumping Cholla and Coral Cacti.

Accordingly, EMU Services created a working relationship with the Carnarvon Land Conservation District Committee (LCDC) which has government agencies such as Shire of Carnarvon, Department of Agriculture and Food WA (DAFWA), Department of Water (DoW), Department of Environment and Conservation (DEC) and others as LCDC members. This allows for a strategic link with

agencies to provide in-kind donations to the project.

The project is in its infancy but is gathering momentum with prospective supervisors being interviewed last week. Once these supervisors are in place the next developmental stage will take place which includes specific land management training and the obvious partnering of LCDC members.

Continued on next page



Photo: Mr. Rodney Ryan – the community champion who with passion and commitment initiated the Gascoyne Indigenous Green Team through constant discussions with Rangelands NRM's Indigenous Facilitator.

Inside this issue:

Gascoyne Indigenous Green	2
Ngurawaana Happenings	3
Regional Landcare Update	4-5
Rangelands Website	6

Gascoyne Indigenous Green Team Cont'd...



EMU Services Manager – Mr Greg Rose is adamant that the Green Team has enormous potential with many spin-off opportunities that should lead to long-term employment and Indigenous business development for the Gascoyne region. Mr Ryan is especially proud of the Green Team and quoted "I have had a keen interest in land management especially Caring for our Country and the opportunities for Aboriginal people to create

businesses and jobs. In the 2 years of planning a lot could've already been done but I know these things do take time. In the long run we will all win". We will continue to update you on the progress of this very new venture as time passes and some runs are on the board. For more information on the Gascoyne Indigenous Green Team, please contact Bevan Gray: bevang@rangelandswa.com.au

Regional Mobile Communications

On 30 March 2011, the State Government called for tenders for a \$39.2 million upgrade of regional mobile telecommunications and radio networks.

Regional Development and Lands Minister Brendon Grylls said an assessment of Western Australia's telecommunications needs indicated a low level of mobile telephone and broadband internet coverage in regional Western Australia. "The tender proposals must outline how the telecommunications carriers will deliver mobile voice and broadband data communications to the greatest

possible number of coverage locations," Mr Grylls said in a statement.

An allocation of \$120.3 million over three years was put aside in the state budget for the Regional Mobile Communications Project. The funding was to be used to expand mobile telephone coverage on the state's major regional highways and address black spots.

More information is available at: <http://www.mediastatements.wa.gov.au/Pages/default.aspx?ItemId=138721&>

Regional Development Australia Fund Caring for Our Country Review

\$1 billion has been provided to the Regional Development Australia Fund (with \$573 million of this being subject to the passage of the Minerals Rent Resource Tax).

The Regional Development Australia Fund will fund projects that support the infrastructure needs, and will enhance the economic and community development, of Australia's regions. Program funds will maximise outcomes through effective partnerships across all levels of government, and the business and not-for-profit sectors.

Questions about the Regional Development Australia Fund should be emailed to RDAF@regional.gov.au or contact the Department's Infoline on 1800 00 5494.

As it is more than halfway through the five year Caring for our Country initiative, the Commonwealth Government decided it was a good time to look at how the activities under CfoC are going, plus to look at the future of the initiative beyond the current cycle which is due to end in 2013.

An important part of the review will be consulting with Australia's natural resource management stakeholders. The views and experiences of our partners and stakeholders are an essential part of informing the review and will help identify program improvements that are practical and focused.

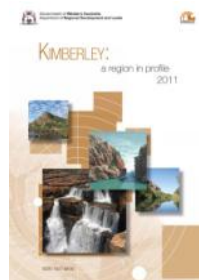
A [public discussion paper](#) is now available to start the ball rolling. Submissions are invited until **20 May 2011**.



Partnerships

Rangelands NRM has produced a fold-out information booklet providing information on Rangelands' approach to partnership building and our achievements in social, environmental and economic outcomes.

These booklets are available at all Rangelands NRM offices.



Kimberley Regional Profile

The Department of Regional Development and Lands, in conjunction with the Kimberley Development Commission, developed the Kimberley Regional Profile to provide a snapshot of the region's economy.

The document can be viewed on the Commissions website: www.kdc.wa.gov.au/

Ngurawaana ESRM planning & RTIO vehicle hand-over



On Tuesday 16th March, Bevan Gray Rangelands NRM's Indigenous Facilitator travelled out to Ngurawaana community from Karratha, in company with ESRM's Richard Glover to conduct a ground proofing exercise before joining the community and RTIO representatives Hardy Derschow, Paul Simmons and Kym Mitchell in celebrating the much anticipated hand-over of a work vehicle that was kindly donated to the Ngurawaana NRM Ranger group by RTIO (Rio Tinto Iron Ore).

Hardy and his superiors, through their kind gesture, have allowed the group to become mobilised therefore



Celebrating the vehicle hand-over at Ngurawaana

creating an ability to really get stuck into the Parkinsonia infestations along the riparian zone of the Lower Fortescue River within the Ngurawaana lease area. Although the ranger project has stalled recently, due to unforeseen circumstances, this unique partnership will result in the rangers having ability to travel into the rough country around Gregory and Doggers Gorges where the Parkinsonia is most prevalent.

The next stage planning is yet to be completed however it will result in many more working hours spent on the river, in an effort to treat and control this Weed of National Significance (WoNS) and therefore enhance the riparian zone which is identified as a Critical Aquatic Habitat. There will, of course, be ongoing training to compliment the efforts of the Ngurawaana NRM Rangers.

ESRM - Ecologically Sustainable Rangelands Management

The ground proofing is all a part of ESRM's quality process which eventually reveals the best parcel of land for stock feed, most appropriate watering points and



Promoting Rangelands NRM with Richard and the team

areas for fencing. This will result in Ngurawaana having the best possible plan for long term land management whilst developing its cattle business into the future. Eventually these practices will bring a sustainable income into the community while creating employment opportunities for the community. The Ngurawaana Community is grateful of the assistance it has received from all stakeholders and sincerely wish to continue to develop as a ranger group that can not only care for its own country but also neighbouring properties as well. All concerned are proud of how far things have come since Rangelands NRM became involved in the process. During the hand-over Rosemary Woodley paid particular attention to the efforts of Rangelands NRM's Indigenous Facilitator for his sustained efforts which was much appreciated.

So for now it is upward and onwards for the Ngurawaana NRM Rangers.



Ngurawaana members with RTIO's Hardy Derschow and Paul Simmons after inspecting the vehicle.

Rangelands Projects



WA Rangelands Regional Landcare Update

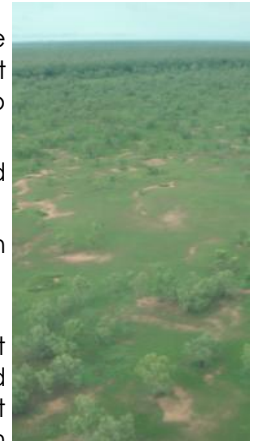
The last newsletter introduced you to the friendly faces of your local Regional Landcare Facilitators: Mel, Alex and Kaz. Since then we have been busy little vegemites settling into our new roles.



Mel and Kaz went to Canberra at the start of March for the first national meeting of the Regional Landcare Facilitator (RLF) Network. This was held in conjunction with the Carbon Farming Initiative (CFI) forum.

The CFI is the carbon offset scheme still being developed by the Australian Government through which farmers, forest growers and landholders can potentially earn carbon credits for implementing certain management practices which reduce green house gas emissions or capture and store carbon. The federal government will be using the RLF network to provide information to land managers. While we will not become carbon experts overnight, as RLFs we will be provided with updates and information to pass on and the contact details of experts who people can talk to regarding specific queries.

- removal or improved management of stock within creeks flowing into the Fitzroy River;
- rehabilitation of clay pans;
- revegetation of floodplain areas;
- improved road construction and maintenance to reduce erosion;
- capturing traditional knowledge of environmental management and passing on these skills to other community members;
- fire management planning and implementation of plans; and
- isolated mesquite population management.



The Fitzroy River Catchment Management Plan was completed in May 2010 following extensive input from the local community through the FitzCAM group. The Plan identified the major threats to the health of the Fitzroy River Catchment and actions needed to address these threats.

Northern Rangelands Update

Working to Protect the Fitzroy River

Rangelands NRM secured funding through the Commonwealth Government's Caring for Our Country Program to undertake on-ground projects in the Fitzroy Catchment. Over the wet there was a call for project proposals which could be completed during the 2011 dry season to improve soil conservation by increasing ground cover and reducing erosion. Strategic control of Weeds of National Significance (WoNS) was also eligible.

The aim of the Fitzroy River Catchment Small Grants Scheme is to help people address threats and undertake activities highlighted in the Fitzroy River Catchment Management Plan which also align with Commonwealth Government Caring for Our Country priorities.

There was a good response to the Scheme with a number of excellent projects securing funding. Issues addressed by the projects include:

The Fitzroy River Catchment Management Plan is available on the Rangelands NRM website at: <http://www.rangelandswa.com.au/pages/178/publications#fxcmp>

Watch out for information about a public meeting to be held in Fitzroy Crossing in May 2011 to provide updates on research being undertaken by Department of Water and other catchment issues.

For further information contact Mel on 9192 5212 or melaniem@rangelandswa.com.au.



Erosion along a tributary of the Fitzroy River

WA Rangelands Regional Landcare Update cont'd..



In addition to working on the Fitzroy River Catchment Small Grants Scheme Mel has been working to make herself known in the region to talk to people about NRM issues and project ideas.

If you are in the Pilbara or Kimberley areas and have any thoughts on what 'Landcare' should look like in these regions please call Mel on 9192 5212 or after hours on 9192 4464.

Central Rangelands Update

The Gascoyne Catchments Group has been busy assisting flood affected pastoralists in pursuing increased Government assistance to help them get back on their feet. Loan subsidy increases and rent relief have been the key opportunities discussed with MP Vince Catania, the Hon Ken Baston MLC and Minister for Agriculture and Food WA Mr. Terry Redman. The recent floods have seen substantial damage to homesteads, infrastructure and livestock losses. The members of the Upper Gascoyne Land Conservation District Committee have expressed their desires to have the flood documented to record an historic event both from a Landcare point of view and an economic point of view.

Following on from reasonable rains in the Ashburton, providing the pastoralists with some relief, the Central Rangelands facilitator Alex Harper will be working with the Ashburton LCDC to assist them in applying for future Landcare projects.

If landholders in the Central rangelands require any more information or assistance please contact Alex on 0402 855 358.



What remains of a section of the road to Gascoyne Junction. First flood, then dust storm, and followed by locusts.

Southern Rangelands Update

Kaz has been getting out and about the region talking to people about NRM issues and project opportunities in addition to working with the ESRM (Ecologically Sustainable Rangelands Management) program.

In early February Kaz went to the National Total Grazing Workshop held in Adelaide which was attended by numerous land managers from all over Australia's Rangelands (3 of whom came from our very own Southern/Central Rangelands backyard). Many robust discussions were had and what has followed is a very active and passionate group of land managers ready to take the grazing bull by the horns and showcase some great examples of how to



Spooky landscape during the wild weather of the December & January rains in WA's Rangelands.

manage the un-manageable.

With her Landcare hat on, Kaz has been working with the Northern Agricultural Catchments Council (NACC) to gather information relating to our Regional Assets and how they link with the 'bigger picture'. The theme is "station to sea" and will see the combined efforts of land managers from the rangelands, the northern ag region and regional communities to outline all of our significant areas (agricultural, environmental, social) to determine the best way to manage them for future generations. This program is in the interim stages of applying for funding to roll out a broad scale project. If you have any thoughts relating to this, please feel free to give me a buzz.

If you are in the Southern Rangelands and have thoughts on how Landcare could look in our region please call Kaz on 9956 3328 or 0437 315 436.

What's Happening with Rangelands' Website!



The Rangelands NRM website has undergone quite a few changes over the last couple of months.

We now have an interactive map on our home page. Roll your mouse over any of our sub-regions, and you will find a brief overview of the relevant region to the left; next if you click on the sub-region 'piece', the project website will open.

In addition, a **newsfeed area** has been added to the home page. This area scrolls through a list of articles that are related to natural resource management, carbon, climate change, north Australia plus other topics. This information is updated on a weekly basis.

If you are looking for information on ESRM (Ecologically Sustainable Rangeland Management) project, then look no further. You can find out how the project is travelling by going to the "Our Projects" section.

Any interesting, news worthy articles will be listed under "What's News?". This area will house items such as meeting notices, conferences, funding rounds etc.

The website is continually changing; visit on a regular basis to catch-up on what is happening.

Any comments on the website can be emailed to:

bethh@rangelandswa.com.au



14th International Riversymposium: 26 - 29 September, 2011 - Brisbane

The *Riversymposium* focuses on rivers and waterways. This year, the *Riversymposium* will explore the multiple reasons that rivers are valuable ranging from economics through to cultural and spiritual values. There will be a prominent focus throughout the conference on natural disasters and their value to rivers and waterways.

For more go to: www.riversymposium.com/

Rabbit mapping website re-launched Kimberley WEEDS Cards

In partnership with government, research, business and community groups, the Invasive Animals CRC has



released a new and improved RabbitScan website and mapping tool for farmers, community groups and anyone with a rabbit problem.

RabbitScan provides a tool to map rabbits, record the damage they cause, and map rabbit control allowing users to create

a rabbit management map for their local area. It is an Australia-wide 'citizen science' project, inviting anyone to spot, collect and report visual or other evidence of rabbits and their impacts.

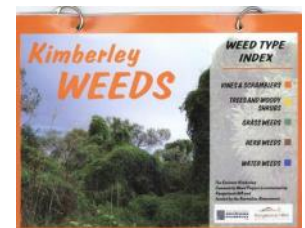
To learn more about RabbitScan, go to

www.feralscan.org.au

The Kimberley Weed Cards have been refined and republished with the assistance of Rangelands NRM WA, Environmental Weeds Action Network and Weeds Society of Western Australia.

Originally created through the Environs Kimberley Community Weed Project, they now include 54 Kimberley weeds, with photographs and control methods. If you would like a free copy please contact

Jason.natureproject@environskimberley.org.au or drop into the Broome or Kununurra Rangelands offices.



They are also available for download at

www.environskimberley.org.au

Perth Office (Head Office)

Oasis House
Suite 3, 37 Hampden Road
Nedlands WA 6009
Phone: 08 9485 8930
Fax: 08 6389 0377
Email: info@rangelandswa.com.au

Broome Office

Lotteries House
PO Box 5238
Broome WA 6726
Phone: 08 9192 5771 (John)
Phone: 08 9192 5212 (Mel)
Fax: 08 9168 3596

Kununurra Office

Shop 24 64 Konkerberry Drive
PO Box 2425
Kununurra WA 6743
Phone: 08 9169 3053
Fax: 08 9168 3596
Email: admin@rangelandswa.com.au

Carnarvon Office

C/- Department of Agriculture & Food
Cnr Research Road & South River Rd
PO Box 887
Carnarvon WA 6701
Phone/Fax: 08 9941 9748

**INSPIRING AND FOSTERING PARTNERSHIPS TO SUSTAINABLY MANAGE
OUR REGION'S NATURAL ASSETS**

www.rangelandswa.com.au

Rangelands NRM WA is the largest NRM region within Australia and encompasses over 86% of Western Australia's landmass and more than 75% of its coastline.

Rangelands NRM WA is a non-government organisation which represents community needs and encourages the sustainable use of land, flora and fauna, fresh water and coastal marine environments.

Rangelands is responsible for the establishment, management, evaluation and communication of many natural resource management activities and projects.

With the rangelands area producing more than 88 percent of Western Australian's mining activities and contributing significantly to the Western Australia's gross domestic product, Rangelands WA strives to balance the needs of the environment with the needs of those who use the land and water resources.



**Easter Holiday Closure: Rangelands' Offices will be closed from 4.30pm,
22 April 2011 and will re-open on Wednesday 27 April 2011.**