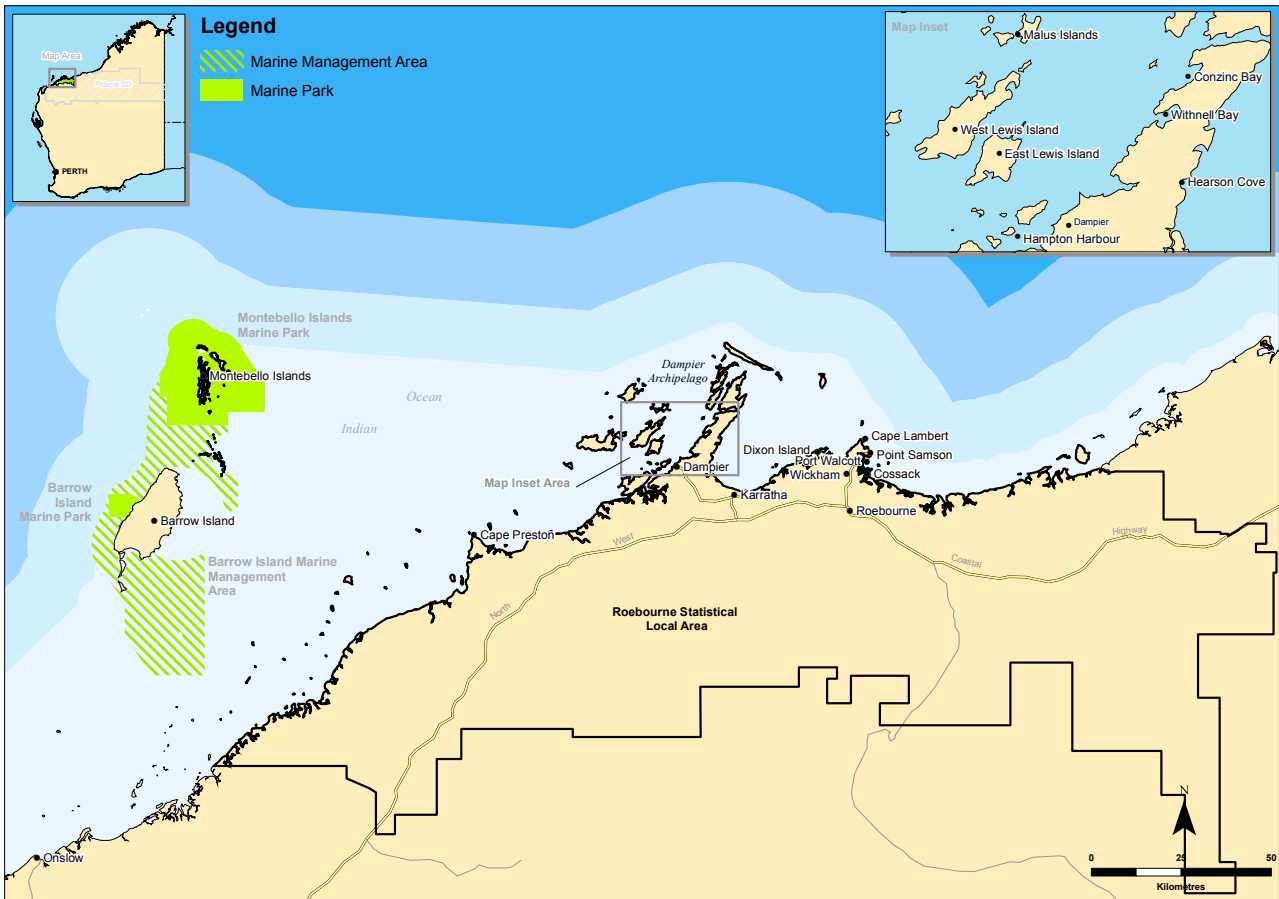


2.4 Roebourne

Roebourne Statistical Local Area is home to some of Western Australia's largest mining and mineral processing operations. Roebourne is also home to the Dampier Archipelago, which is a popular destination for visitors and local residents alike. Roebourne has two key coastal settlements, Dampier and Karratha. Both of these settlements provide services to the mining sector, and general administrative and social welfare services to the greater region. Figure 2.10 illustrates the location of Roebourne Statistical Local Area.

Figure 2.10 Roebourne Statistical Local Area



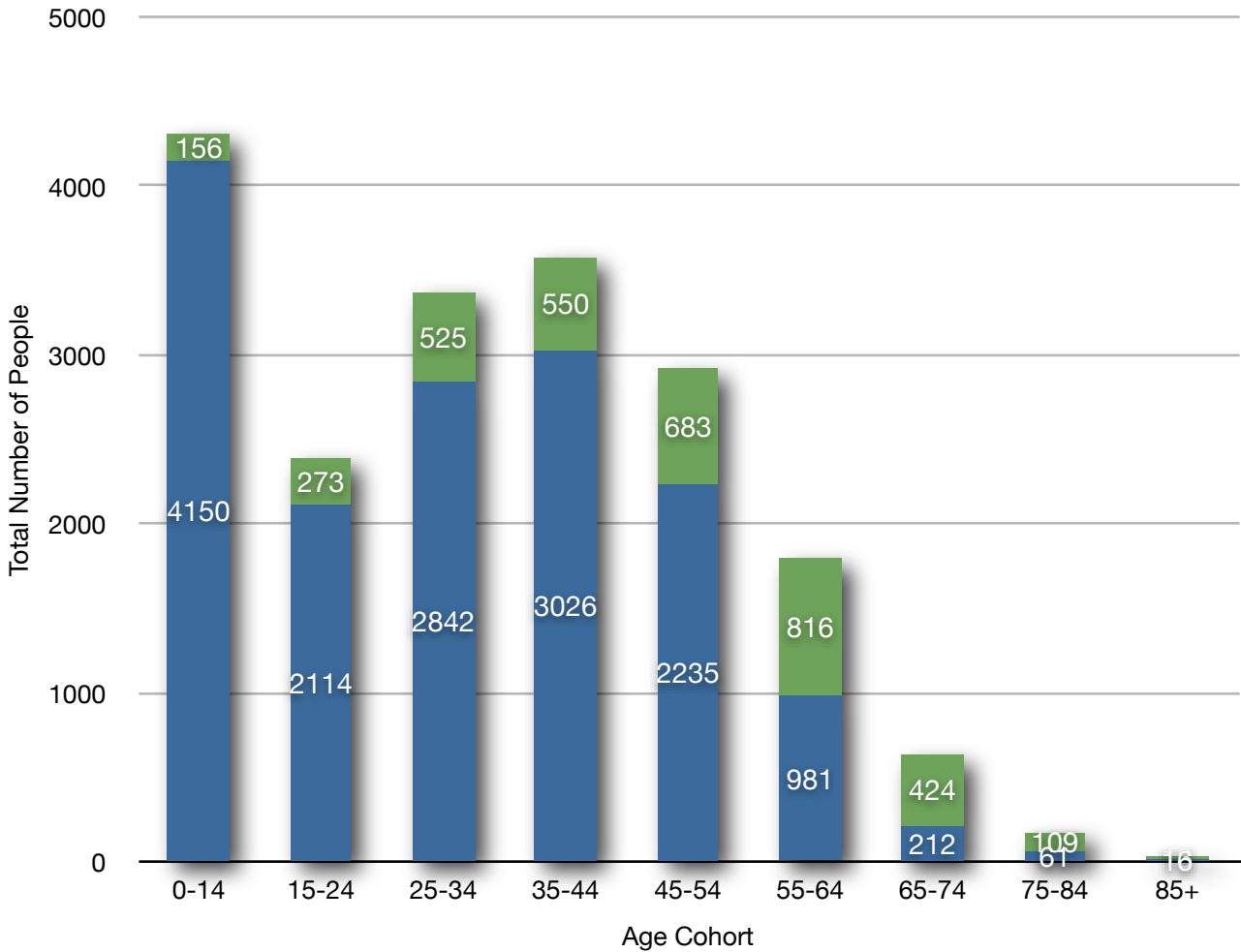
In July 2006, the total number of people in Roebourne was just over 19,000 (Australian Bureau of Statistics, 2007). More than 3,500 people, or 18.5% of the counted population, were visitors (Australian Bureau of Statistics, 2007). Table 2.5 provides data on where visitors come from, indicating that 77% of visitors come from Western Australia. Figure 2.10 illustrates the age profile of visitors as a proportion of the total number of people counted in Roebourne. Figure 2.11 shows that for the age cohorts 55-65, 65-74, 75-84 and 85+ more that 45%, 65%, 64% and 56% were visitors to the area. It is probable that many of these visitors were not involved in the formal labour force, and were likely to be in the region as tourists.

Table 2.5 Roebourne Visitor Trends, July 2006

	Age Cohort									Total
	0-14	15-24	25-34	35-44	45-54	55-64	65-74	75-84	85+	
Roebourne Residents	4150	2114	2842	3026	2235	981	212	61	16	15637
Visitors from New South Wales	8	0	26	26	36	51	27	3	0	177
Visitors from Victoria	0	19	22	36	52	70	33	11	7	250
Visitors from Queensland	4	0	16	32	38	68	32	7	0	197
Visitors from South Australia	0	0	16	7	25	30	19	6	3	106
Visitors from Western Australia	137	250	438	442	522	572	298	82	3	2744
Visitors from Tasmania	0	4	0	0	6	18	9	0	0	37
Visitors from Northern Territory	7	0	7	7	4	0	0	0	0	25
Visitors from Australian Capital Territory	0	0	0	0	0	7	6	0	0	13
Total Visitors	156	273	525	550	683	816	424	109	13	3549
Total Persons	4306	2387	3367	3576	2918	1797	636	170	29	19186
% of Total Population Who Are Visitors	3.5%	11.5%	15.6%	15.4%	23.4%	45.4%	66.6%	64%	56%	18.5%

(Source: Australian Bureau of Statistics, 2007)

Figure 2.11 Proportion of Visitors in Roebourne, July 2006



(Source: Australian Bureau of Statistics, 2007)

In 2008, there were four caravan parks in Roebourne. Between these parks there were 388 powered sites and 150 cabins (Australian Bureau of Statistics, 2009). Only 32 unpowered sites were provided across the four caravan parks (Australian Bureau of Statistics, 2009). Importantly, 209 sites were occupied by long term guests (Australian Bureau of Statistics, 2009). Many of these guest were employed in the mining industry, or related construction and services sectors. The high costs of housing in Karratha and Dampier have meant that many workers, particularly lower paid workers, sought permanent accommodation at caravan parks. The high level of permanent occupancy of the caravan parks in Roebourne means that many visitors face difficulties in securing caravan park style accommodation. Often visitors need to book months in advance of their stay. The low number of unpowered sites and the crowded nature of the caravan parks has resulted in visitors seeking alternate, more remote, camping locations. Table 2.6 lists the public coastal camping locations in Roebourne.

Table 2.6 Coastal Camping Areas in Roebourne

	Management Agency	Type
Fortescue River Mouth	Shire of Roebourne (seasonal on site host)	Unpowered, self-sufficient visitors, free
Forty Mile (Gnoorea Point)	Shire of Roebourne (on site caretaker)	Unpowered, self-sufficient visitors, \$7 per night per person
Conzinc Bay Burrup Peninsula	Shire of Roebourne	Unpowered, self-sufficient visitors, free
Dampier Archipelago	Department of Environment and Conservation	Unpowered, self-sufficient visitors, free
Cleaverville	Shire of Roebourne	Unpowered, self-sufficient visitors, \$7 per night per person
Balla Balla	Shire of Roebourne	Unpowered, self-sufficient visitors, free

In addition to the above listed camping locations, some visitors with access to boats travel to the islands of the Dampier Archipelago and the Montebello group. It is not known how many people camp on these islands. The Department of Environment and Conservation are responsible for managing the Montebello group, however, rarely visit the islands to monitor the nature and intensity of uses. It is thought that most visitors to the Montebello group stay between one and three weeks. Visitors to the islands of the Dampier Archipelago tend to stay for only a few nights to a week. Anecdotal evidence suggests that visitation to the islands of the Dampier Archipelago has grown over the last decade, with more fly-in-fly-out workers participating in coastal camping and fishing during their breaks. Camping on the Montebello Islands has remained steady over the last decade.