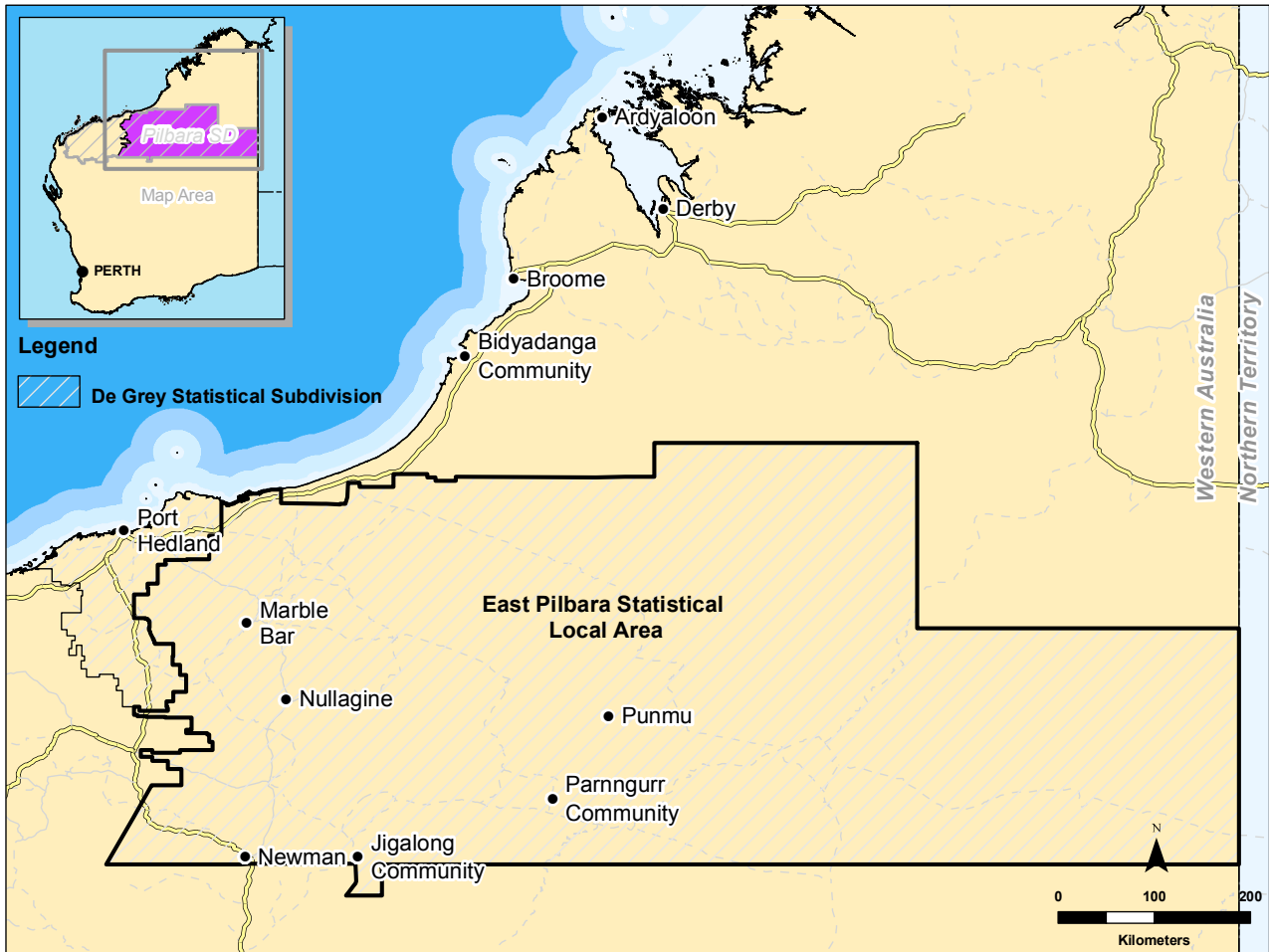


2.6 East Pilbara

East Pilbara Statistical Local Area is over 370,000 square kilometres in size, stretching from the Northern Territory border to the Indian Ocean (as shown in Figure 2.14). The area has a very small coastline of approximately 60 kilometres. There are no major urban settlements within the East Pilbara coastal area, with much of the area part of the Cape Keraudren Nature Reserve and 80 Mile Beach Ramsar Wetland area.

Figure 2.14 East Pilbara Statistical Local Area



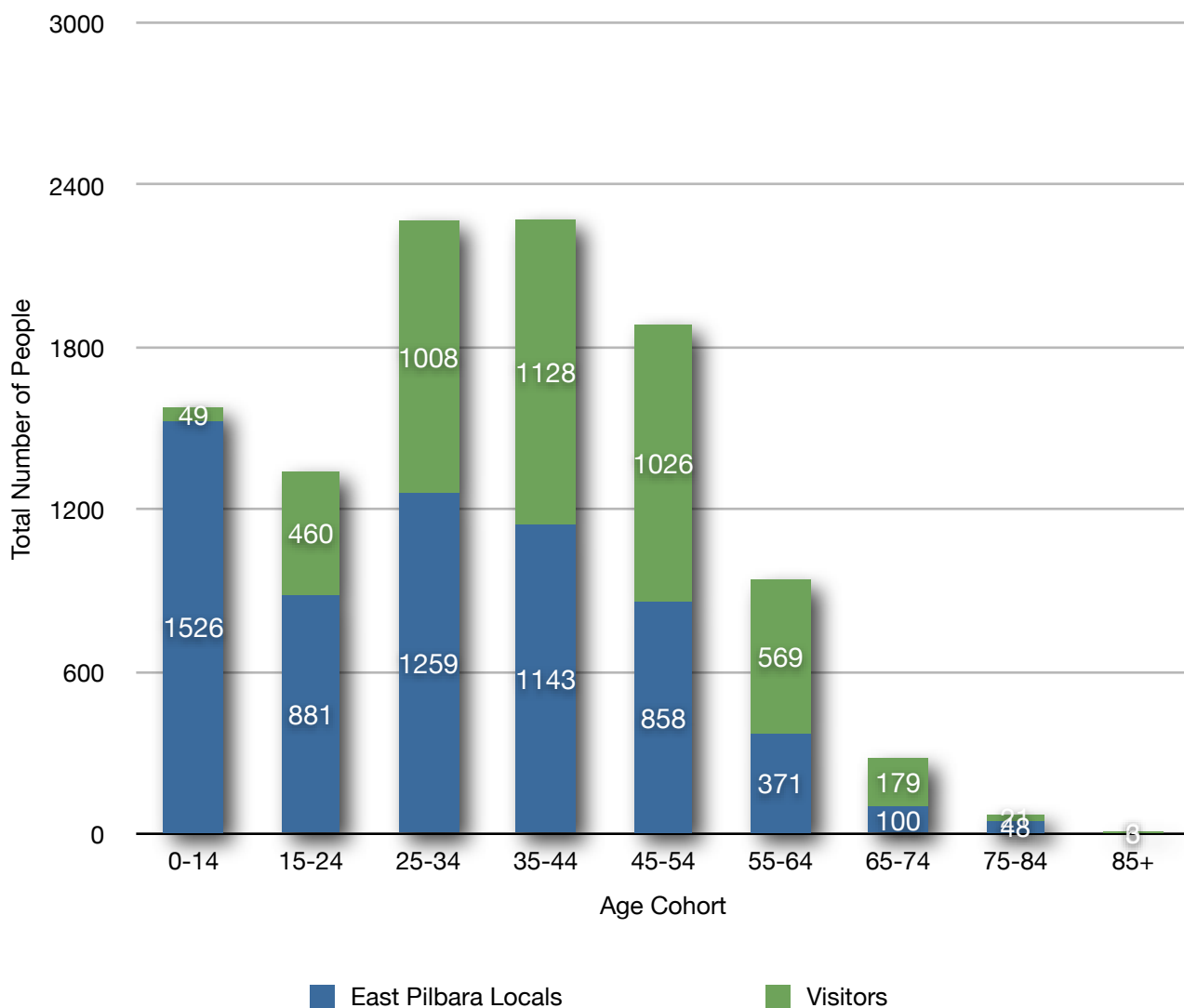
In July 2006, 41% of people counted in East Pilbara Statistical Local Area were visitors (Australian Bureau of Statistics, 2007). Many of these visitors would have been fly-in-fly-out workers, or tourists visiting inland destinations including the Karijini National Park and the Rudall National Park. Due to the limited capacity of camping and accommodation facilities in coastal areas, few visitors would have been recorded in the coastal parts of the East Pilbara. Table 2.8 shows the origin of visitors to the East Pilbara as counted in July 2006. From this table it can be seen that most visitors to the area are from other parts of Western Australia. Figure 2.15 illustrates the age profile of visitors to the area compared to local residents. This figure reveals that most visitors to the area were of 'working' age, with most aged between 25 and 55 years.

Table 2.8 East Pilbara Visitor Trends, July 2006

	Age Cohort									Total
	0-14	15-24	25-34	35-44	45-54	55-64	65-74	75-84	85+	
East Pilbara Residents	1526	881	1259	1143	858	371	100	48	3	6189
Visitors from New South Wales	0	0	11	6	25	26	10	7	0	85
Visitors from Victoria	5	5	15	11	24	23	12	0	3	98
Visitors from Queensland	0	4	18	19	35	29	11	3	0	119
Visitors from South Australia	0	5	6	5	21	6	9	0	0	52
Visitors from Western Australia	44	443	953	1079	921	475	131	11	3	4060
Visitors from Tasmania	0	3	5	3	0	4	3	0	0	18
Visitors from Northern Territory	0	0	0	5	0	6	0	0	0	11
Visitors from Australian Capital Territory	0	0	0	0	0	0	3	0	0	3
Total Visitors	49	460	1008	1128	1026	569	179	21	6	4446
Total Persons	1575	1341	2267	2271	1184	940	279	69	9	10635
% of Total Population Who Are Visitors	3.1%	34.3%	44.5%	46.7%	86.6%	60.5%	64.2%	30.4%	66.6%	41.8%

(Source: Australian Bureau of Statistics, 2007)

Figure 2.15 Proportion of Visitors in East Pilbara, July 2006



(Source: Australian Bureau of Statistics, 2007)

In 2008, in East Pilbara there were three caravan parks with a total of 416 sites (Australian Bureau of Statistics, 2009). Half of the available sites were on-site vans or cabins, with half of these being permanently occupied (Australian Bureau of Statistics, 2009).

Popular remote camping locations in the East Pilbara are located inland in the Karijini National Park and the Rudall River National Park. Visitors to the coastal areas of the East Pilbara tend to stay at Pardoo Station or Cape Keraudren Nature Reserve (described in Table 2.9).

Table 2.9 Coastal Camping Areas in East Pilbara

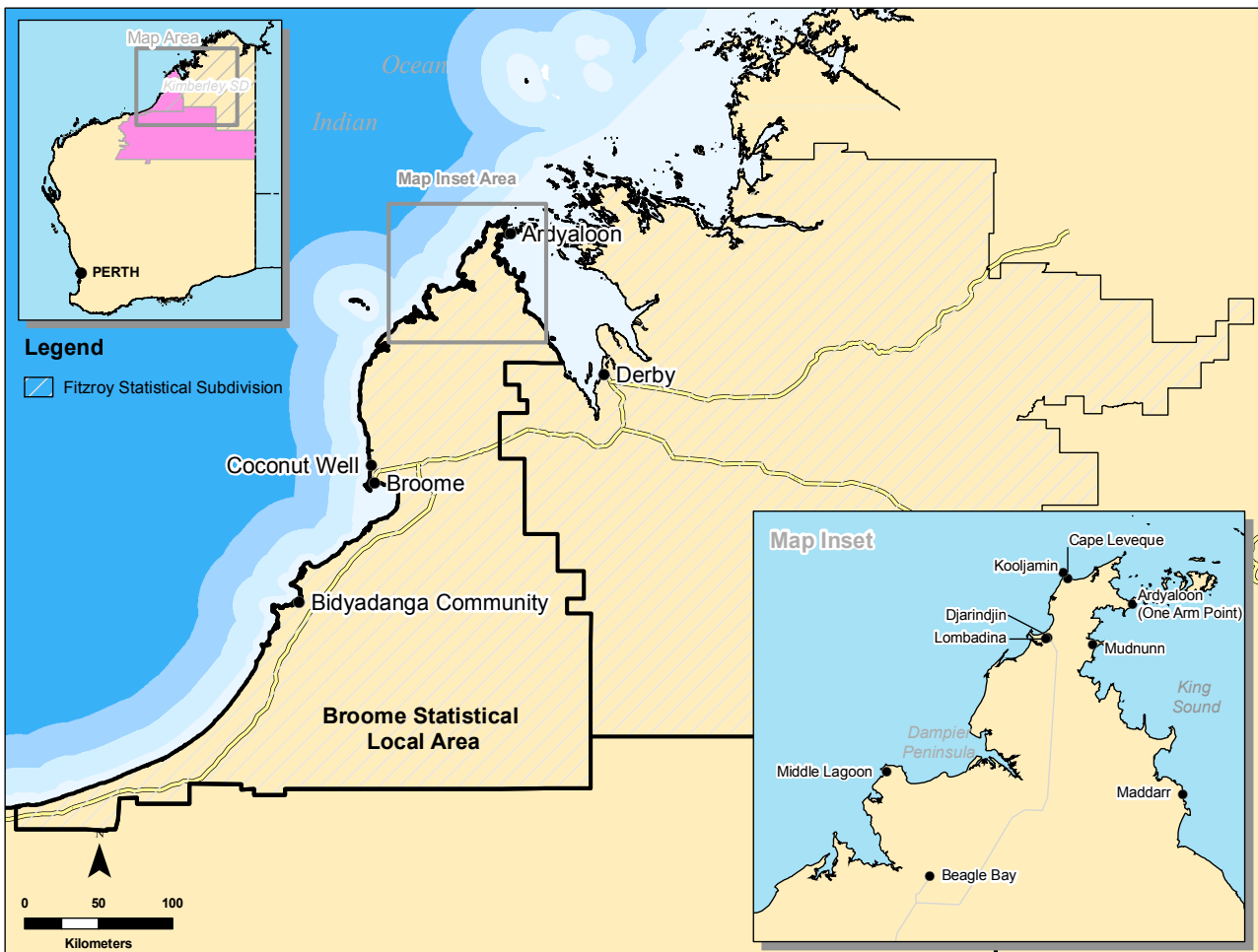
	Management Agency	Type
Pardoo Station	Pardoo Station	Powered and unpowered, self-sufficient visitors, between \$7.70 and \$17.70 per person per night
Cape Keraudren Nature Reserve	Shire of East Pilbara (site ranger)	Unpowered, self-sufficient visitors, \$7.50 per vehicle per night

Most coastal camping occurs within the camp grounds provided by Pardoo station and the Shire of East Pilbara at Cape Keraudren Nature Reserve. Evidence suggests that very little camping occurs along the coast outside of these areas.

2.7 Broome

Broome Statistical Local Area extends from 80 Mile Beach in the south to the Dampier Peninsula in the north (as shown in Figure 2.16). Broome Statistical Local Area is home to some of Western Australia’s most famous beaches including 80 Mile Beach and Cable Beach. The coastline is largely undeveloped, with the town of Broome the largest urban settlement in the area. There are more than 60 small Indigenous communities in Broome’s coastal area, with non-exclusive native title rights recognised over much of this area. Much of the land of the Dampier Peninsula is Aboriginal Reserve Land, as is the coastal land around the community of Bidyadanga.

Figure 2.16 Broome Statistical Local Area



In July 2006, 37% of the population counted in Broome Statistical Area were visitors (Australian Bureau of Statistics, 2007)². 56.7% of visitors to the area were from other parts of Western Australia and 16.3% and 10.8% were from Victoria and New South Wales

² The Shire of Broome advised the Authors in May 2009 that the 2006 Australian Bureau of Statistics Population and Housing Census did not adequately capture all Broome residents and visitors. It was suggested that up to 15% of people in the region did not participate in the Census. Therefore, raw figures for population of Broome may be inaccurate. General trends about the population and visitors are likely to be representative.