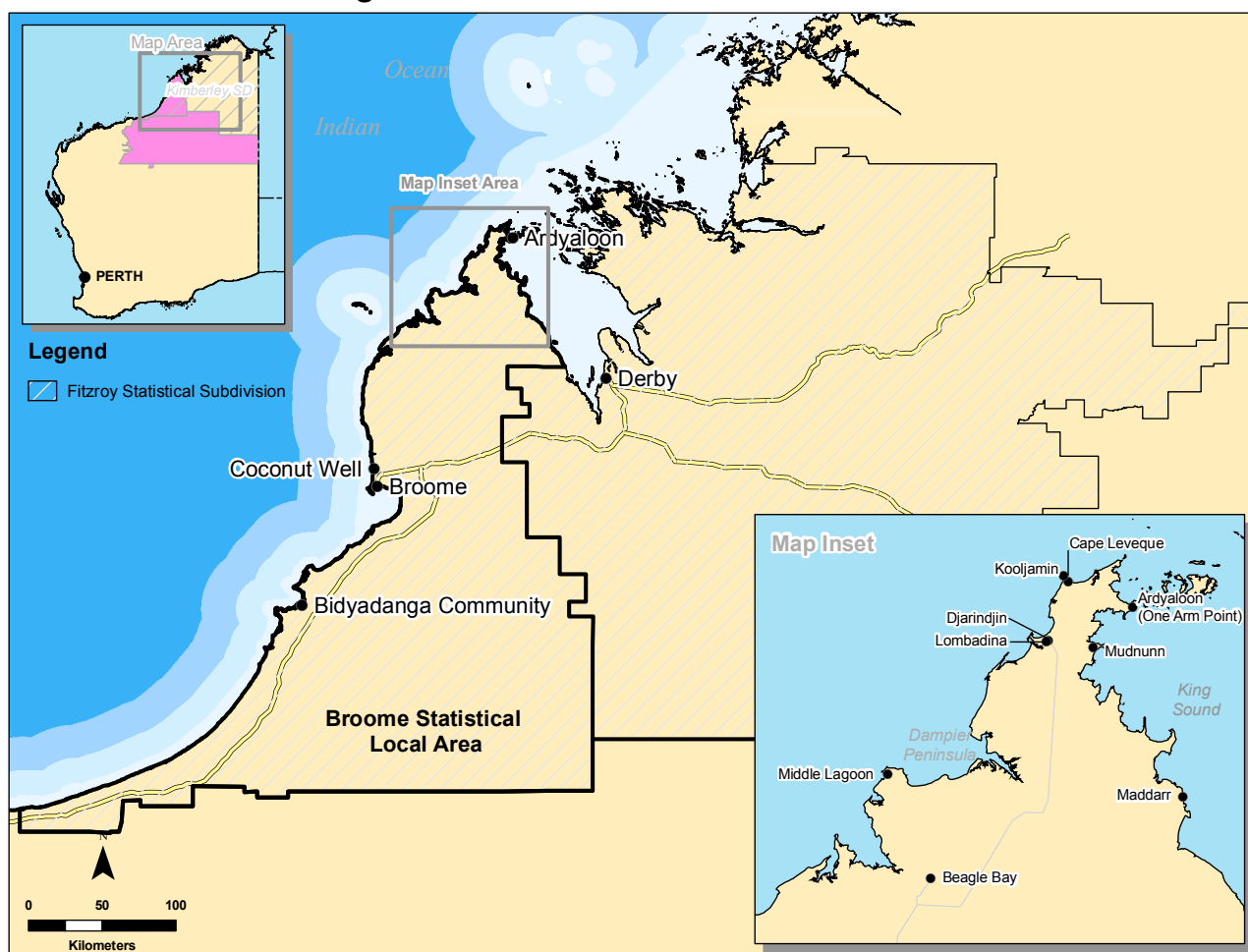


Most coastal camping occurs within the camp grounds provided by Pardoo station and the Shire of East Pilbara at Cape Keraudren Nature Reserve. Evidence suggests that very little camping occurs along the coast outside of these areas.

## 2.7 Broome

Broome Statistical Local Area extends from 80 Mile Beach in the south to the Dampier Peninsula in the north (as shown in Figure 2.16). Broome Statistical Local Area is home to some of Western Australia's most famous beaches including 80 Mile Beach and Cable Beach. The coastline is largely undeveloped, with the town of Broome the largest urban settlement in the area. There are more than 60 small Indigenous communities in Broome's coastal area, with non-exclusive native title rights recognised over much of this area. Much of the land of the Dampier Peninsula is Aboriginal Reserve Land, as is the coastal land around the community of Bidyadanga.

**Figure 2.16 Broome Statistical Local Area**



In July 2006, 37% of the population counted in Broome Statistical Area were visitors (Australian Bureau of Statistics, 2007)<sup>2</sup>. 56.7% of visitors to the area were from other parts of Western Australia and 16.3% and 10.8% were from Victoria and New South Wales

<sup>2</sup> The Shire of Broome advised the Authors in May 2009 that the 2006 Australian Bureau of Statistics Population and Housing Census did not adequately capture all Broome residents and visitors. It was suggested that up to 15% of people in the region did not participate in the Census. Therefore, raw figures for population of Broome may be inaccurate. General trends about the population and visitors are likely to be representative.

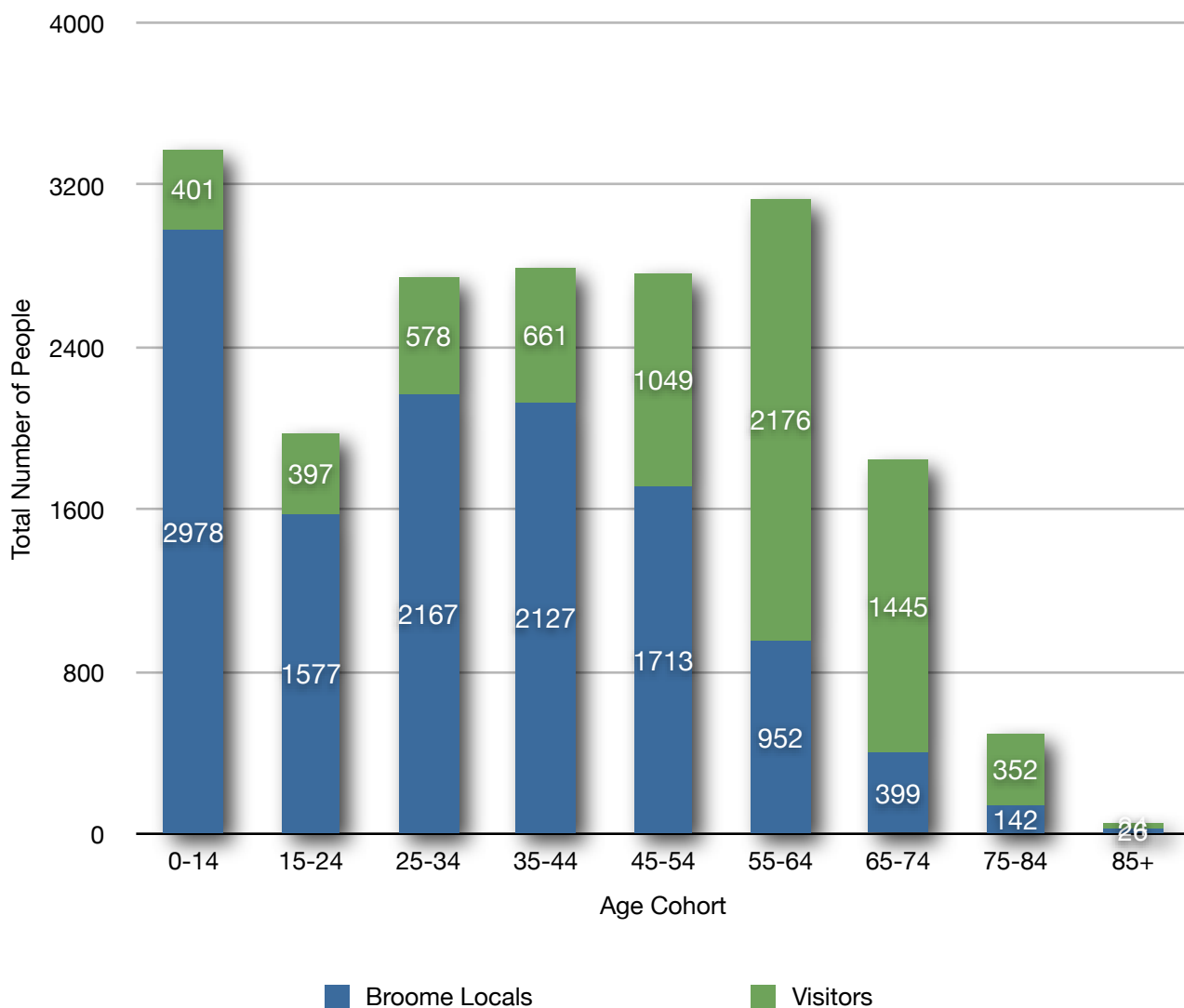
respectively (Australian Bureau of Statistics, 2007). Table 2.10 shows the state/ territory of origin of visitors. Figure 2.17 illustrates the age profile of visitors to the area compared to local residents. Figure 2.17 shows that 40.6% of people counted, aged between 55 and 84 years, were visitors. This reflects the popularity of the region during winter months with older travellers and, in particular, 'grey nomads'.

**Table 2.10 Broome Visitor Trends, July 2006**

	Age Cohort									Total
	0-14	15-24	25-34	35-44	45-54	55-64	65-74	75-84	85+	
Broome Residents	2978	1577	2167	2127	1713	952	399	142	26	12081
Visitors from New South Wales	12	29	51	48	115	278	177	56	4	770
Visitors from Victoria	88	40	77	101	179	398	221	45	5	1154
Visitors from Queensland	18	12	20	30	71	159	82	10	0	402
Visitors from South Australia	14	8	21	23	67	135	115	22	3	408
Visitors from Western Australia	252	282	383	429	574	1132	829	216	12	4109
Visitors from Tasmania	6	7	5	8	15	37	11	0	0	89
Visitors from Northern Territory	5	19	18	16	11	9	7	0	0	85
Visitors from Australian Capital Territory	6	0	3	6	17	28	3	3	0	66
Total Visitors	401	397	578	661	1049	2176	1445	352	24	7083
Total Persons	3379	1974	2745	2788	2762	3128	1844	494	50	19164
% of Total Population Who Are Visitors	11.8%	20.1%	21%	23.7%	33.5%	69.6%	78.4%	71.2%	48%	36.9%

(Source: Australian Bureau of Statistics, 2007)

**Figure 2.17 Proportion of Visitors in Broome, July 2006**



(Source: Australian Bureau of Statistics, 2007)

In 2008, there were five caravan parks in the Broome Statistical Local Area. Across these caravan parks there were 1433 bays (including on-site vans and cabins) (Australian Bureau of Statistics, 2009). In total there were 30 on-site vans and 92 cabins (Australian Bureau of Statistics, 2009). 183 of the sites were either permanently occupied or reserved (Australian Bureau of Statistics, 2009). In Broome Statistical Local Area there were 1150 powered sites and 181 unpowered sites (Australian Bureau of Statistics, 2009). There are also three temporary locations which open up for camping when the five caravan parks are at capacity. These locations are managed by the Police and Citizens Youth Club and local churches. The Shire of Broome are the management authority that determines if, and when, these temporary camping areas can be opened. In addition to these caravan parks and temporary camping area, there are a number of other camping sites in Broome. Table 2.11 lists the popular camping sites in the Broome Statistical Local Area.

**Table 2.11 Coastal Camping Sites in the Broome Statistical Local Area**

	Management Agency	Type
Barn Hill Station Stay	Kimberley Cattle Station	Powered and unpowered, fees apply
Broome Bird Observatory	Broome Bird Observatory	Unpowered and cabins, fees apply
Willie Creek	Shire of Broome	Unpowered, self-sufficient visitors, free
Barred Creek	Shire of Broome	Unpowered, self-sufficient visitors, free
Quondong Beach	Shire of Broome	Unpowered, self-sufficient visitors, free
James Price Point	Shire of Broome	Unpowered, self-sufficient visitors, free
Point Coloumb Nature Reserve	Department of Environment and Conservation	Unpowered, self-sufficient visitors, free
Bindurrk Hideaway	Traditional Ownership Group	Unpowered, self-sufficient visitors, fees apply
Neem Wonderland	Traditional Ownership Group	Unpowered and cabins, fees apply
Nature's Hideaway at Middle Lagoon	Traditional Ownership Group	Powered and unpowered, cabins, fees apply
Munget	Munget Camel Rides	Unpowered and cabins, fees apply
Chile Creek	Traditional Ownership Group	Unpowered, self-sufficient visitors, fees apply
Kooljaman	Traditional Ownership Group	Unpowered and safari tents, fees apply
Gambanan	Traditional Ownership Group	Unpowered, self-sufficient visitors, fees apply
Djoodoon - Bully's Camp	Traditional Ownership Group	Unpowered and cabins, fees apply
Mudnunn	Traditional Ownership Group	Unpowered, self-sufficient visitors, fees apply
La Djardarr Bay	Traditional Ownership Group	Unpowered, self-sufficient visitors, fees apply

Only a very minor amount of camping occurs in coastal area outside of designated camping areas. Traditional owners do occasionally establish temporary coastal camps to participate in fishing or other cultural activities.

## 2.8 Conclusion: Coastal Camping in the Rangelands

Visitation trends and coastal camping opportunities are varied along the rangelands coast. Visitation trends for Carnarvon and Broome Statistical Local areas showed that a considerable proportion of visitors were aged over 55 years. It is probable that most of these visitors were not participating in the labour force, and were in the region for recreational reasons. Caravan park accommodation trends also revealed that the areas had numerous accommodation options available for campers seeking serviced camping sites. Other information on coastal camping locations showed that in each area there were a range of managed and unmanaged bush camping sites available for visitors. The availability of a variety of camping options has resulted in the Carnarvon and Broome areas being popular destinations for many campers.